

EXPLANATIONS  
ALL MEASURES ARE IN MILLIMETERS.

NOTES  
THE SLIDING WINDOW SHALL BE TYPE 9018, SVALSON AB SWEDEN (+46 911 66725).

CONSTRUCTION  
MOTOR, TRANSMISSION AND AUTOMATIC LOCKING SHALL BE PLACED WITHIN THE FRAME.

LOCKING  
THE SLIDING WINDOW SHALL BE LOCKED AUTOMATICALLY IN CLOSED POSITION. (LOCKING IN 50 mm INTERVAL IS OPTIONAL.)

FINISH  
THE ALUMINIUMPROFILES SHALL BE SATIN ANODISED. (OR ANY OTHER FINISH, FOR INSTANCE COLOUR COATED OR ANODISED IN OTHER COLOURS.)

GLASS  
DOUBLE GLAZING 4-12-4. (OR ANY OTHER TYPE OF GLASS WITH A MAXIMUM THICKNESS OF 20 mm. FOR INSTANCE 14 mm LAMINATED GLASS CLASS P6B.)

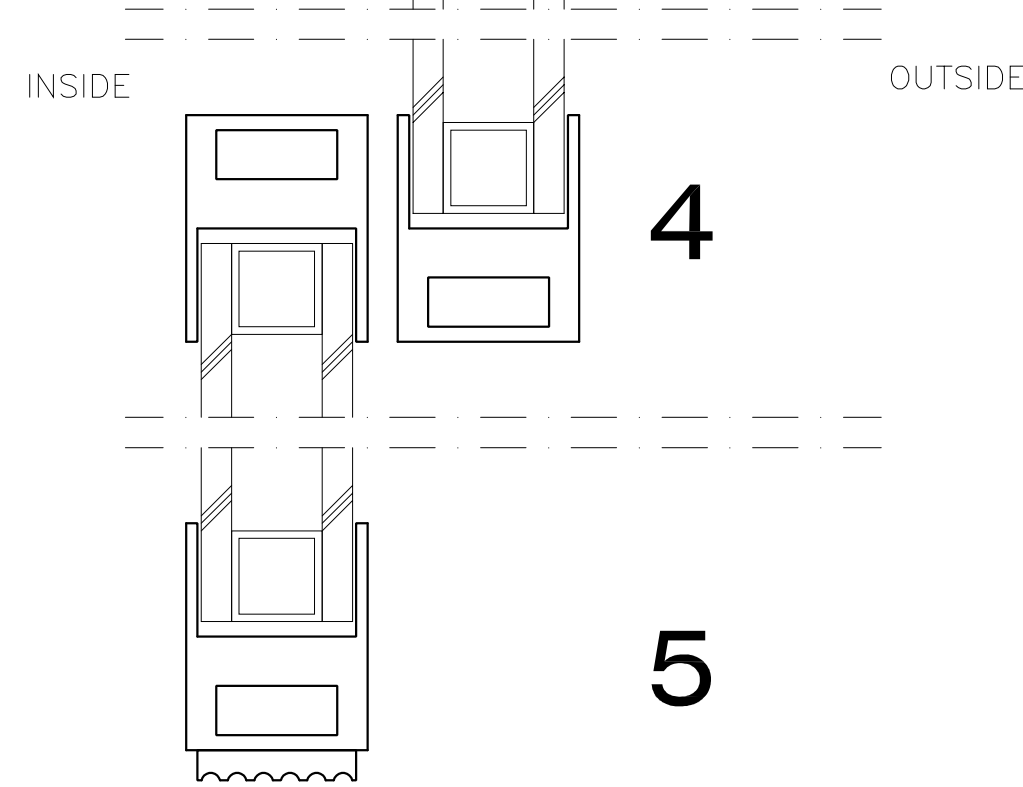
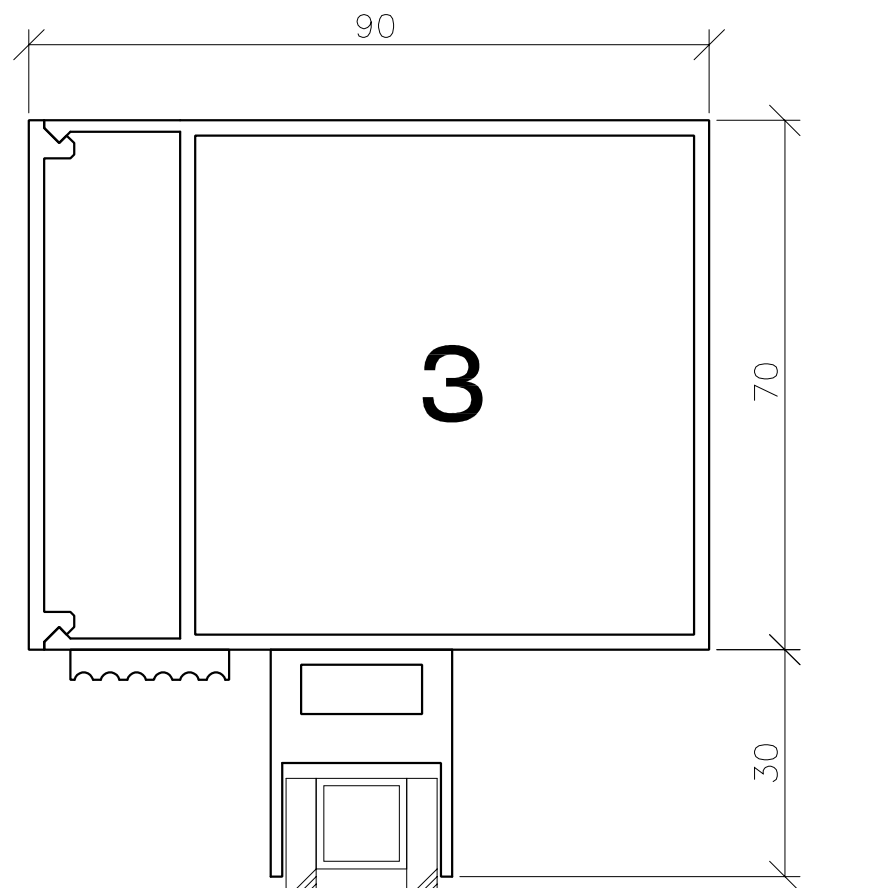
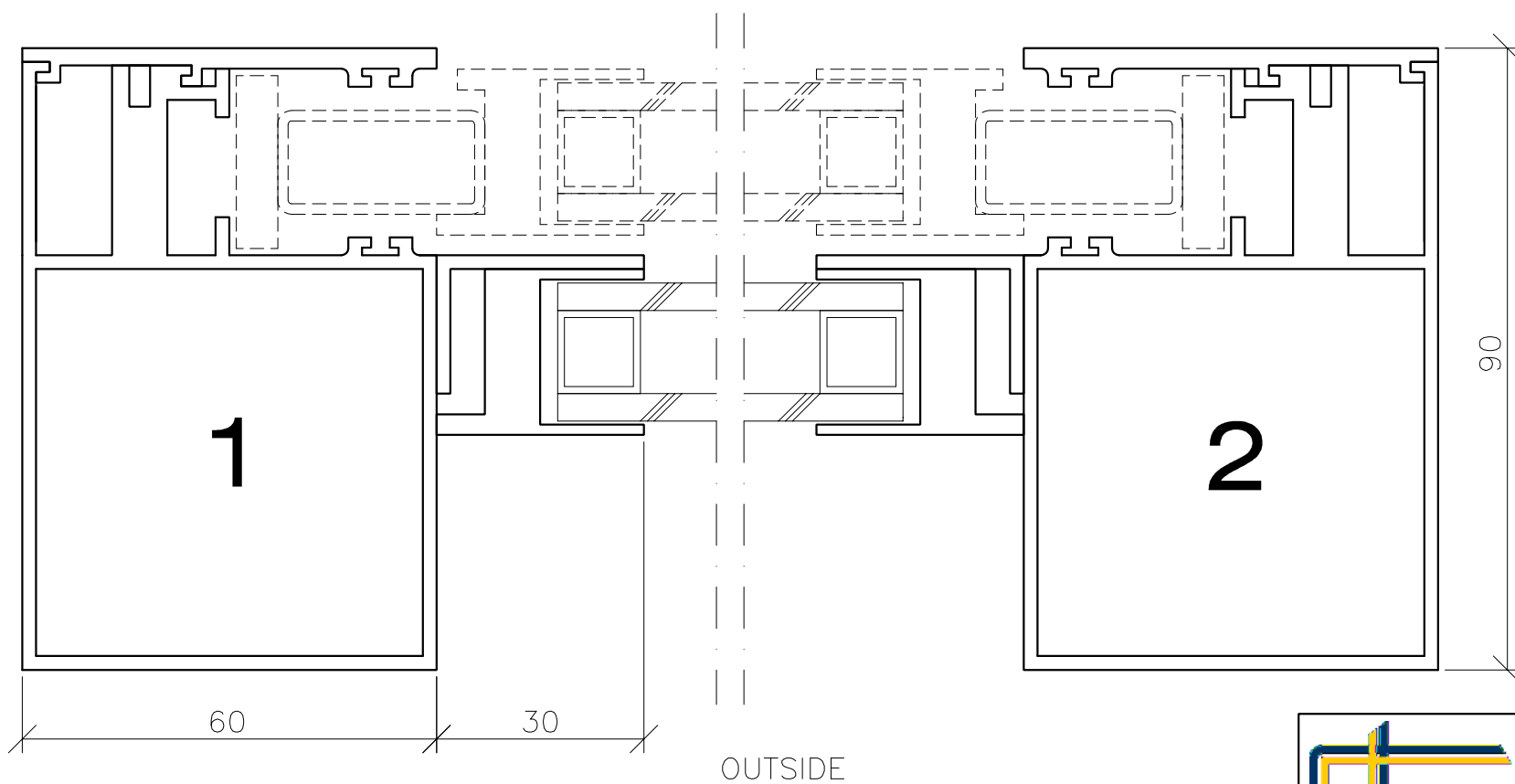
OPENINGSPEED  
THE OPENINGSPEED OF THE SLIDING WINDOW IS APPROX. 200 mm/SECOND.

REV	REVISION REFERES TO	DATE	SIGN
-----	---------------------	------	------

SVALSON AB  
Phone +46 911-66725  
Telefax +46 911-66680  
http://www.svalson.com

Box 584  
S-943 28 Öjebyn  
SWEDEN

SLIDING WINDOW TYPE 9018		VIEW FROM OUTSIDE	<input checked="" type="checkbox"/>
DRAWN/DESIGN	SCALE	VIEW FROM INSIDE	
---	1:1		
DATE	DRAWING NUMBER	REV	
DD.MM.YY	9018. A		



REV	REVISION	REFERES TO	DATE	SIGN

  
 SVALSON AB  
 Phone +46 911-66725  
 Telefax +46 911-66680  
<http://www.svalson.com>

**SLIDING WINDOW**  
**TYPE 9018**  
 DRAWN/DESIGN: --- SCALE: 1:1  
 DATE: DD.MM.YY DRAWING NUMBER: 9018. A  
 VIEW FROM OUTSIDE   
 VIEW FROM INSIDE

Box 584  
 S-943 28 Öjebyn  
 SWEDEN