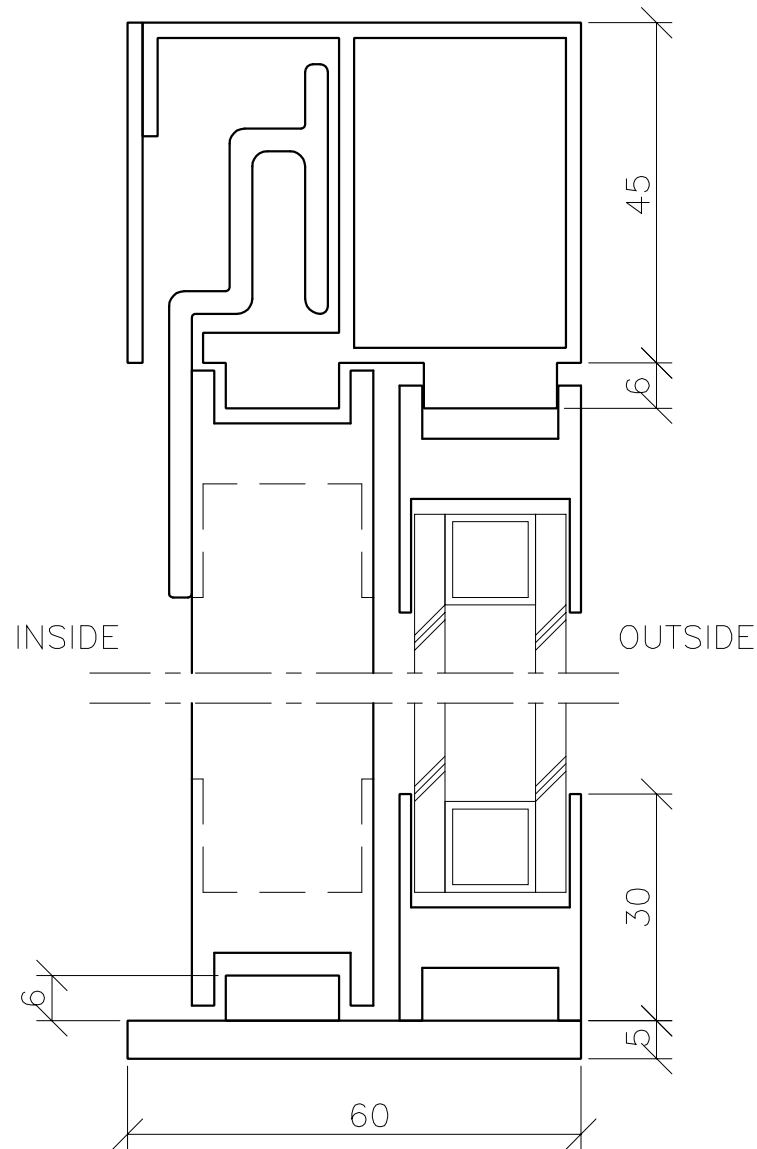
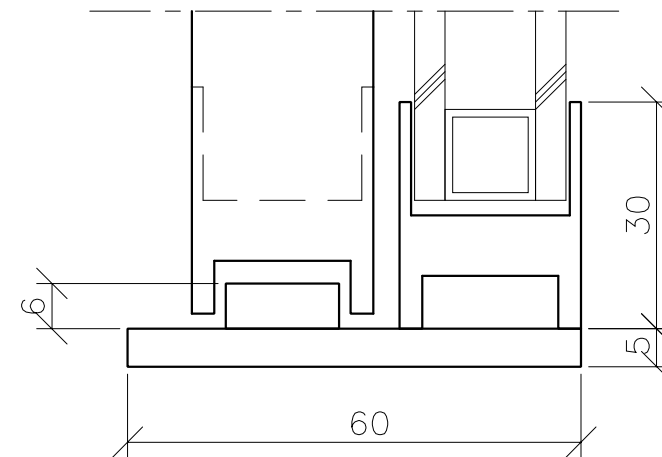


4



5



EXPLANATIONS
ALL MEASURES ARE IN MILLIMETERS.

NOTES
THE SLIDING WINDOW SHALL BE TYPE 6018, SVALSON AB SWEDEN (+46 911 66725).

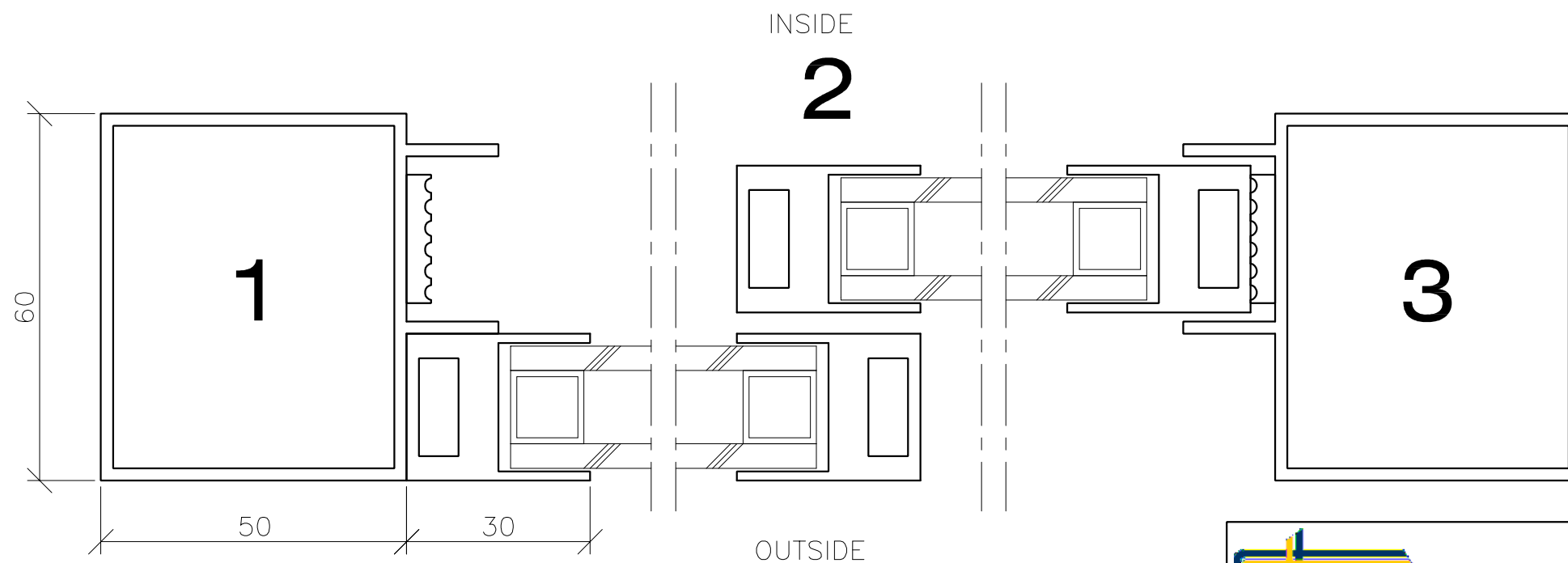
CONSTRUCTION
MOTOR, TRANSMISSION AND AUTOMATIC LOCKING SHALL BE PLACED WITHIN THE FRAME.

LOCKING
THE SLIDING WINDOW SHALL BE LOCKED AUTOMATICALLY IN CLOSED POSITION AND EACH 50 mm OF THE OPENING WIDTH.

FINISH
THE ALUMINIUMPROFILES SHALL BE SATIN ANODISED. (OR ANY OTHER FINISH, FOR INSTANCE COLOUR COATED OR ANODISED IN OTHER COLOURS.)

GLASS
DOUBLE GLAZING 4-12-4. (OR ANY OTHER TYPE OF GLASS WITH A MAXIMUM THICKNESS OF 20 mm. FOR INSTANCE 14 mm LAMINATED GLASS CLASS P6B.)

OPENINGSPEED
THE OPENINGSPEED OF THE SLIDING WINDOW IS APPROX. 200 mm/SECOND.



2

3

REV	REVISION REFERES TO	DATUM	SIGN
-----	---------------------	-------	------



SVALSON AB
Phone +46 911-66725
Telefax +46 911-66680
http://www.svalson.com

Box 584
S-943 28 Öjebyn
SWEDEN

SLIDING WINDOW TYPE 6018		VIEW FROM OUTSIDE	VIEW FROM INSIDE
DRAWN/DESIGN	SCALE	VIEW FROM INSIDE	
---	1:10, 1:1		
DATE	DRAWING NUMBER	REV	
DD.MM.YY	6018.		